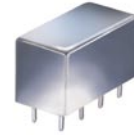


Plug-In Frequency Mixer

SRA-2+

Level 7 (LO Power +7 dBm) 1 to 1000 MHz



Maximum Ratings

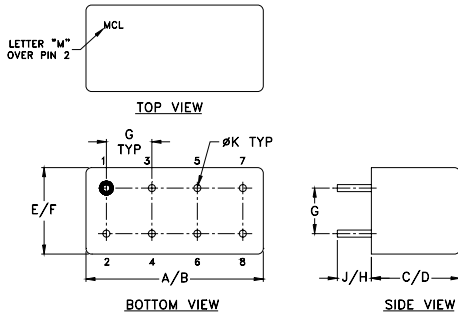
Operating Temperature	-55°C to 100°C
Storage Temperature	-55°C to 100°C
RF Power	50mW
IF Current	40mA

Pin Connections

LO	8
RF	3,4 [^]
IF	1
GROUND	2,5,6,7
CASE GROUND	2,5,6,7

[^] pins must be connected together externally

Outline Drawing



Outline Dimensions (inch/mm)

A	B	C	D	E	F
.770	.800	.385	.400	.370	.400
19.56	20.32	9.78	10.16	9.40	10.16
G	H	J	K	wt	
.200	.20	.14	.031	grams	
5.08	5.08	3.56	0.79	5.2	

Features

- excellent conversion loss, 5.66 dB typ.
- good L-R isolation, 35 dB typ. L-I isolation, 30 dB typ.
- rugged welded construction
- hermetic

Applications

- UHF/VHF
- cellular
- defense & federal communications
- ISM/GSM

CASE STYLE: A01
PRICE: \$20.20 ea. QTY (1-9)

+ RoHS compliant in accordance with EU Directive (2002/95/EC)

The +Suffix has been added in order to identify RoHS Compliance. See our web site for RoHS Compliance methodologies and qualifications.

Electrical Specifications

FREQUENCY (MHz)		CONVERSION LOSS (dB)				LO-RF ISOLATION (dB)						LO-IF ISOLATION (dB)					
LO/RF	IF	Mid-Band		Total Range	Max.	L		M		U		L		M		U	
f_L - f_U		\bar{X}	σ			Typ.	Min.	Typ.	Min.	Typ.	Min.	Typ.	Min.	Typ.	Min.	Typ.	Min.
1-1000	.5-500	5.66	.07	7.5	8.5	45	30	35	20	30	20	45	30	30	20	30	20

1 dB COMP.: +1 dBm typ.

L = low range [f_L to $10 f_L$]
m = mid band [$2 f_L$ to $f_U/2$]

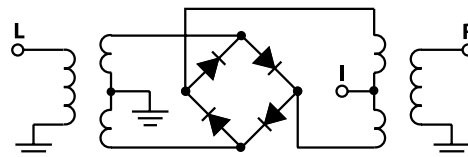
M = mid range [$10 f_L$ to $f_U/2$]

U = upper range [$f_U/2$ to f_U]

Typical Performance Data

Frequency (MHz)		Conversion Loss (dB)	Isolation L-R (dB)	Isolation L-I (dB)	VSWR RF Port (:1)	VSWR LO Port (:1)
RF	LO	LO +7dBm	LO +7dBm	LO +7dBm	LO +7dBm	LO +7dBm
1.00	31.00	5.81	62.40	66.60	1.73	3.13
10.00	40.00	5.74	67.00	67.00	1.73	2.99
20.00	50.00	5.87	63.37	67.00	1.73	3.08
50.00	80.00	5.77	55.36	58.05	1.74	2.94
100.00	70.00	5.79	49.04	52.36	1.80	2.86
160.32	130.32	5.85	45.18	48.76	1.86	2.78
200.00	170.00	5.92	43.67	47.23	1.97	2.72
284.57	254.57	5.95	41.08	44.56	2.06	2.74
346.69	316.69	6.00	39.04	43.59	2.17	2.74
408.82	378.82	6.15	36.94	43.85	2.23	2.85
500.00	470.00	6.25	35.65	41.57	2.21	2.86
533.07	503.07	6.19	34.41	42.87	2.11	2.92
595.20	565.20	5.96	33.15	37.76	1.98	2.94
688.39	658.39	5.57	31.77	38.59	1.78	3.02
750.51	720.51	5.59	30.90	40.39	1.66	3.13
800.00	770.00	5.60	30.50	41.73	1.56	3.33
843.70	813.70	5.64	30.24	41.84	1.55	3.40
905.83	875.83	5.62	28.94	47.26	1.57	3.45
967.95	937.95	5.81	28.12	35.84	1.56	3.47
1000.00	970.00	6.10	27.73	32.72	1.41	3.30

Electrical Schematic



Mini-Circuits®
ISO 9001 ISO 14001 CERTIFIED

ALL NEW
minicircuits.com

P.O. Box 350166, Brooklyn, New York 11235-0003 (718) 934-4500 Fax (718) 332-4661 For detailed performance specs & shopping online see Mini-Circuits web site



The Design Engineers Search Engine Provides ACTUAL Data Instantly From MINI-CIRCUITS At: www.minicircuits.com

RF/IF MICROWAVE COMPONENTS

REV. A
M98898
SRA-2
DJ/TD/CP/AM
061211
Page 1 of 2

